

# Monitor Bracket Instructions

## Orbital Truss Applications



### OR-SM-MB

Sizes: 17" - 37"

Max weight varies per application

**Assembled unit:**

9" w x 16" h x 1.4" d  
230mm (w) x 410mm (h) x 35mm (d)

**Shipping dimensions:**

14" l x 6" h x 4" d  
356mm (l) x 152mm (h) x 102mm (d)

**Approximate total shipping weight:**

6 lb / 2.7 kg

**VESA:**

75 x 75 - 200 x 200mm



### OR-M-MB

Sizes: 32" - 55"

Max weight varies per application

**Assembled unit:**

16" w x 16" h x 1.4" d  
410mm (w) x 410mm (h) x 35mm (d)

**Shipping dimensions:**

24" l x 4" h x 4" d  
610mm (l) x 102mm (h) x 102mm (d)

**Approximate total shipping weight:**

8 lb / 3.6 kg

**VESA:**

100 x 100 - 400 x 400mm



### OR-LG-MB

Sizes: 40" - 65"

Max weight varies per application

**Assembled unit:**

24" w x 16" h x 1.4" d  
610mm (w) x 410mm (h) x 35mm (d)

**Shipping dimensions:**

28" l x 6" h x 6" d  
711mm (l) x 152mm (h) x 152mm (d)

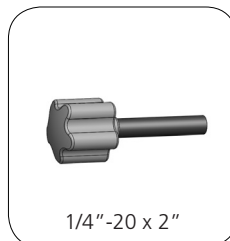
**Approximate total shipping weight:**

9 lb. / 4.1 kg

**VESA:**

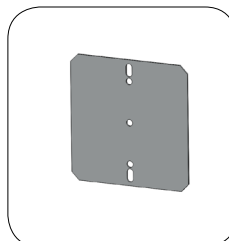
100 x 100 - 600 x 400mm

## Included hardware:

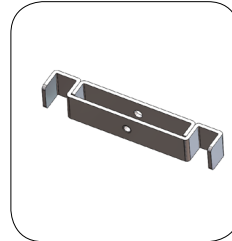


1/4"-20 x 2"

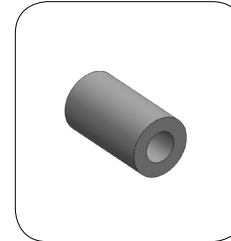
**OR-IS-KNOB-2 x2**



**OR-TVA-PLT x1**



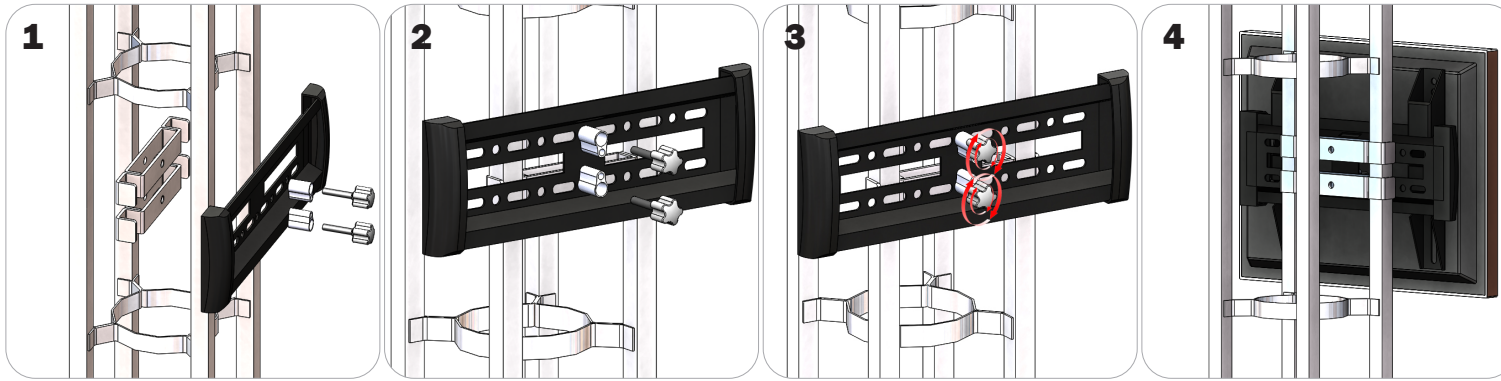
**OR-TVA-PBKT x2**



**Spacer x2**

# Orbital Truss Connection

## Vertical Connection



Locate all components needed to assemble the monitor mount with the Vertical Orbital Truss method. You will need (1) monitor bracket, (2) OR-TVA-PBKT-1 brackets, (2) OR-KNOB-2, and (2) spacers. Determine your desired monitor location.

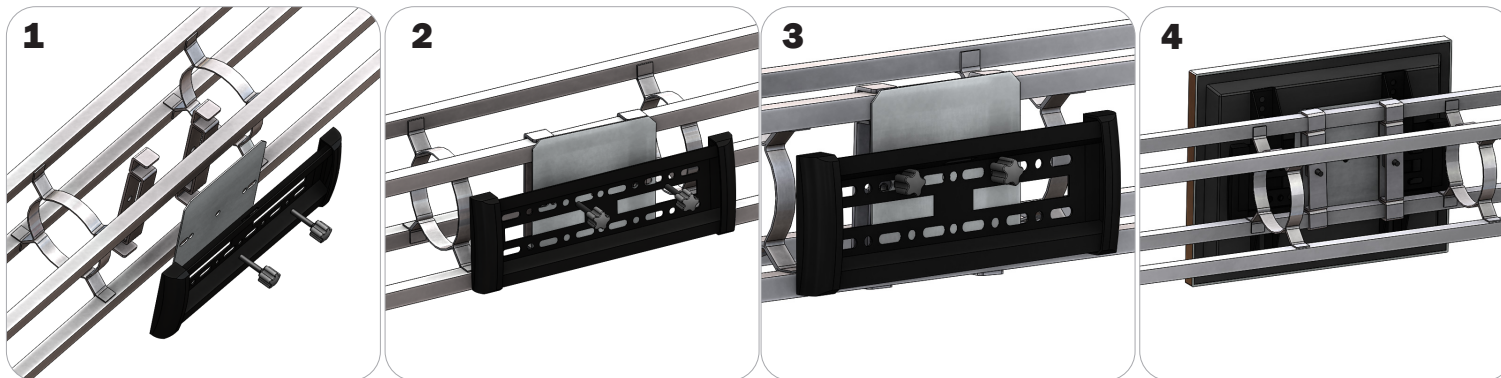
**Step 1:** Place the OR-TVA-PBKT-1 brackets so that they wrap around the posts of the truss.

**Step 2:** Align your monitor bracket so that the center holes align with the bracket holes behind them.

**Step 3:** One at a time place a spacer over the hole and thread your OR-KNOB-2 thumbscrews.

**Step 4:** Reference the included manufacturer monitor mount instructions for fastening your monitor to the bracket.

## Horizontal Connection



Locate all components needed to assemble the monitor mount with the Horizontal Orbital Truss method.

You will need (1) monitor bracket, (2) OR-TVA-PBKT-1 brackets, (2) OR-KNOB-2, and (1) OR-TVA-PLT. Determine your desired monitor location.

**Step 1:** Place the OR-TVA-PBKT-1 brackets so that they wrap around the posts of the truss. Add your OR-TVA-PLT and align the holes to the OR-TVA-PBKT-1.

**Step 2:** Align your monitor bracket so that the left and right holes align with the plate holes behind them.

**Step 3:** One at a time thread your OR-KNOB-2 thumbscrews through the holes.

**Step 4:** Reference the included manufacturer monitor mount instructions for fastening your monitor to the bracket.