

# Vector Frame Kit 07

## VF-K-07


Stand apart from the competition with a clean, sophisticated 10' x 10' or 10' x 20' Vector Frame™ exhibit kit. These graphic mural kits feature square-corner 50mm extrusion frames and push-fit fabric graphics that cover the entire frame. Vector Frame Essential kits are easy to assemble and disassemble.



## features and benefits:

- 50mm silver extrusion frame
- Single-sided fabric graphics
- Easy step-by-step instructions
- Kit includes: one frame, five fabric graphics, six 120 watt lights, and two wheeled molded cases
- Lifetime hardware warranty against manufacturer defects

## dimensions:

Hardware	Graphic
<p>Assembled unit: 223.35" w x 94.5" h x 28" d 5673mm(w) x 2400mm(h) x 711mm(d)</p> <p>Approximate weight: 117 lbs / 54 kg</p>	<p>Refer to related graphic template for more information.</p> <p>Visit: <a href="http://www.exhibitors-handbook.com/graphic-templates">www.exhibitors-handbook.com/graphic-templates</a></p>
Shipping	<b>additional information:</b>
<p>Packing case(s): 1 OCE 1 OCH2</p> <p>Shipping dimensions: OCE: Expandable case length (l) may vary 40" - 66" l x 18" h x 18" d 1016mm-1677mm(l) x 458mm(h) x 458mm(d)</p> <p>OCH2: 52" l x 29" h x 15" d 1321mm(l) x 737mm(h) x 381mm(d)</p> <p>Approximate total shipping weight: 174 lbs / 79 kg</p>	<p>Graphic material: Dye-sublimation SEG push-fit fabric</p> <p>Lights included: Lumina 200</p>
<p><b>2 person assembly recommended:</b></p> 	

We are continually improving and modifying our product range and reserve the right to vary the specifications without prior notice. All dimensions and weights quoted are approximate and we accept no responsibility for variance. E&OE. See Graphic Templates for graphic bleed specifications.

# Included In Your Kit

Tools, Components, & Connectors



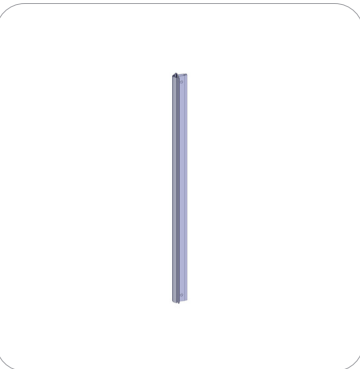
5MM ALLEN-T x1



PHFC2-1155-L-L1 x6



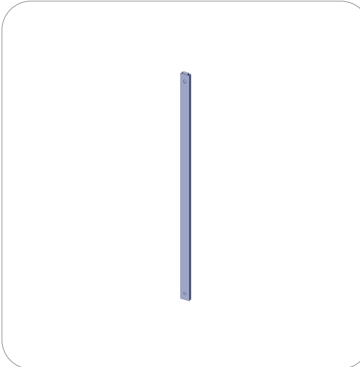
PHFC2-900-L-L x4



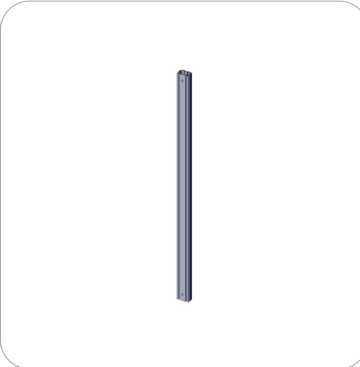
PMFC2-90-1193-L1-L1 x8



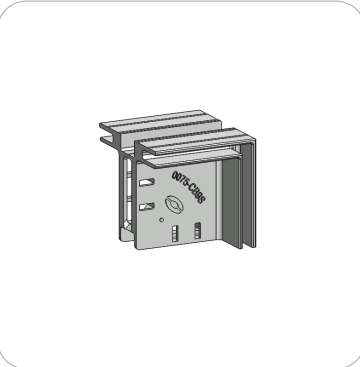
PHFC2-600-L-L x6



PH-1155-L1-S x4



PMFC2-T-1193-L1-L1 x2



CB9-S x6



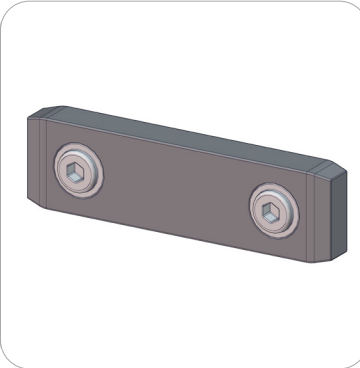
PHFC2-900-L-L1 x8



PMFC2-90-CAP x8



PMFC2-T-CAP x2



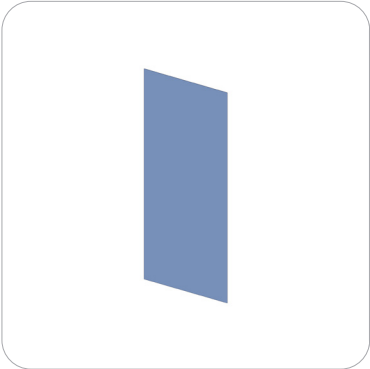

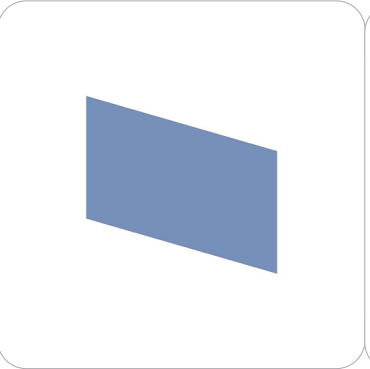

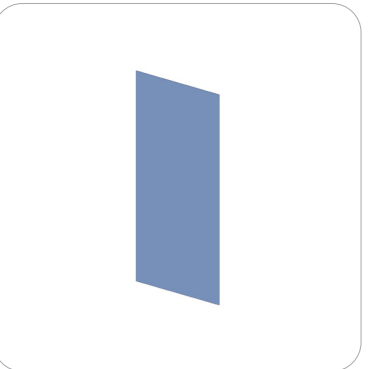
IB2 x12



LUM-200-ORL x6

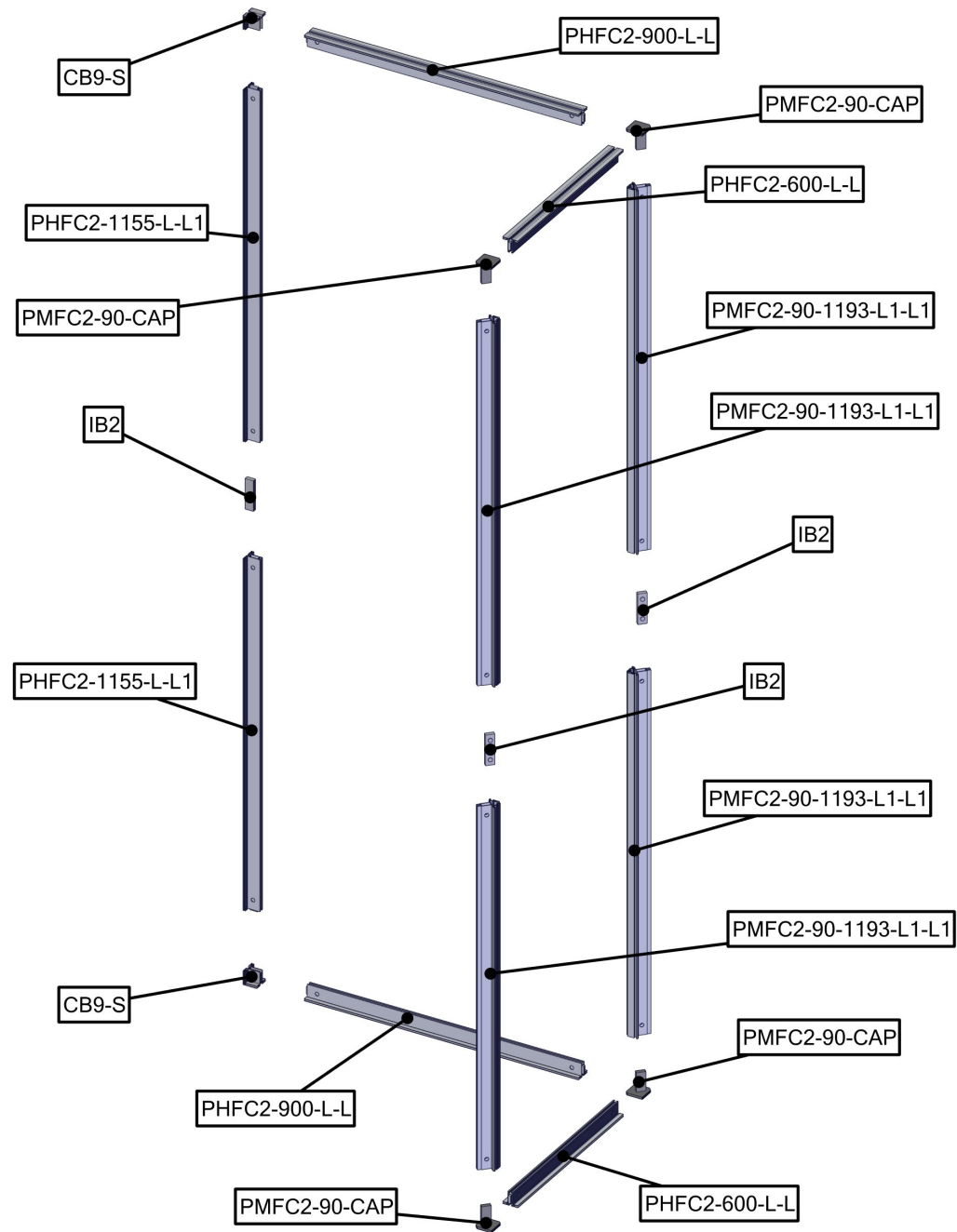
# Included In Your Kit

Graphics

				
VF-07-A-G x1	VF-07-B-G x1	VF-07-C-G x1	VF-07-D-G x1	VF-07-E-G x1

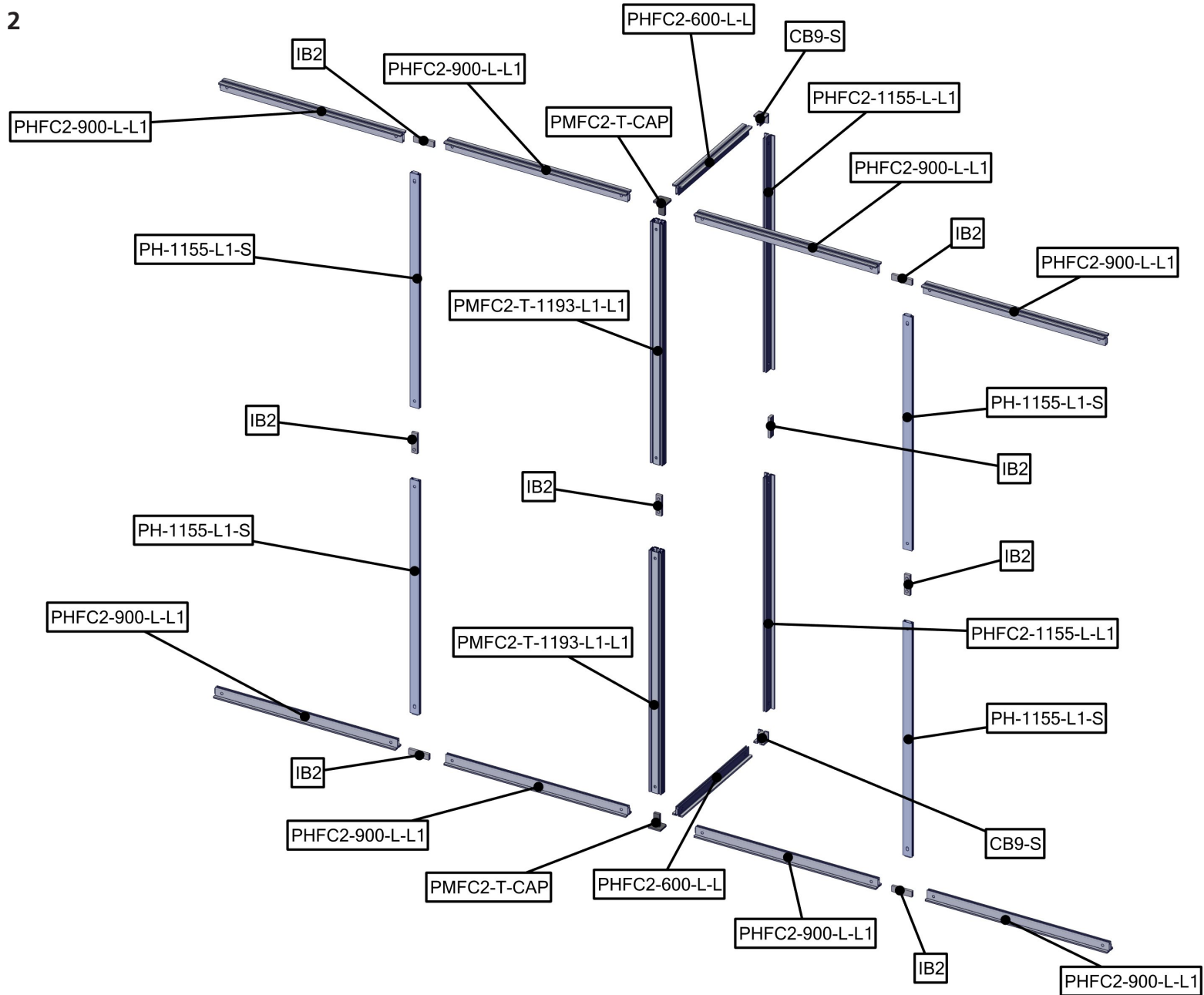
# Exploded View

VF-K-07  
SECTION 1



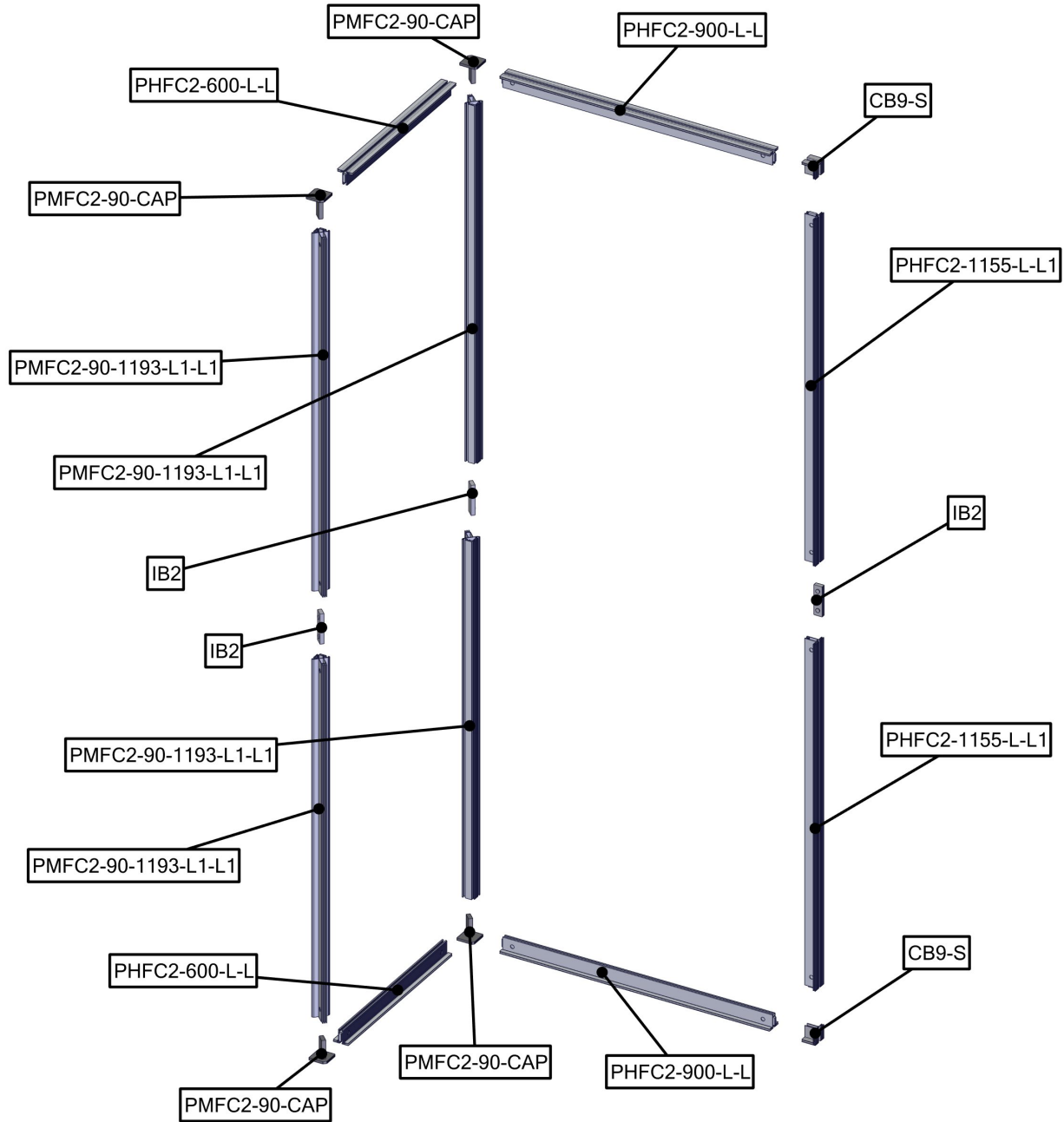
# Exploded View

VF-K-07  
SECTION 2



# Exploded View

VF-K-07  
SECTION 3



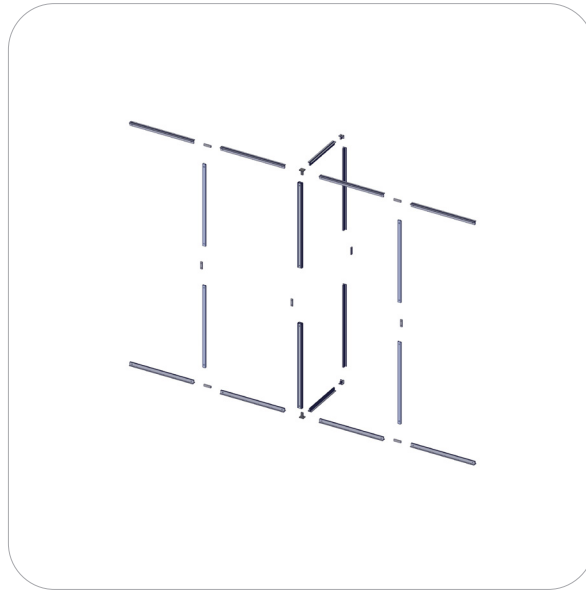
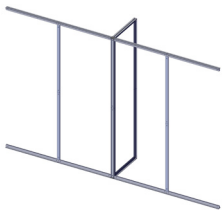
# Kit Assembly

## Step by Step

### Step 1.

Gather the components to build the second section. Use the Exploded View for part labels.

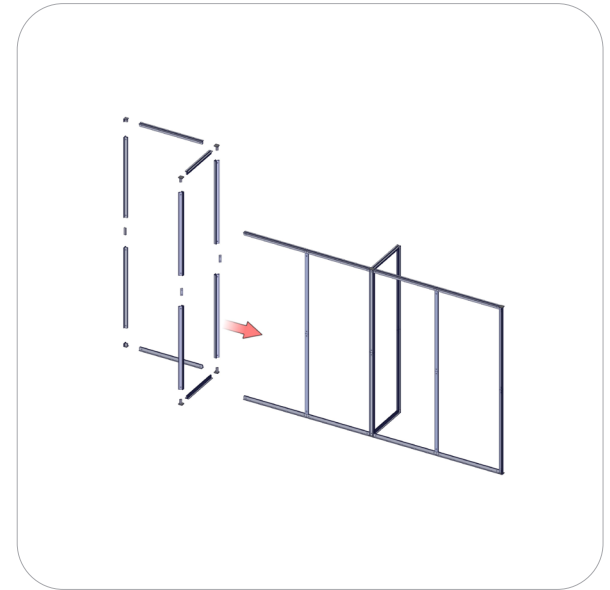
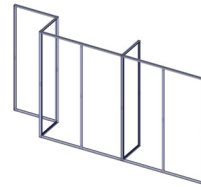
Reference Connection Method(s) 1, 2, 3, and 4 for more details.



### Step 2.

Gather the components to build the first section and then attach it to the left side of the second section. Use the Exploded View for part labels.

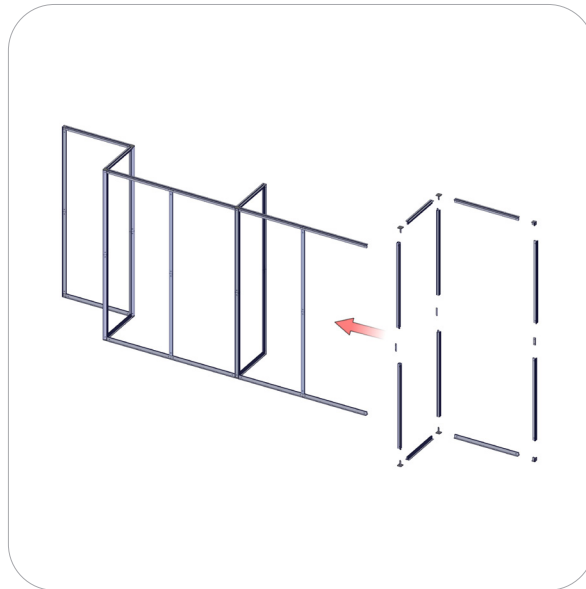
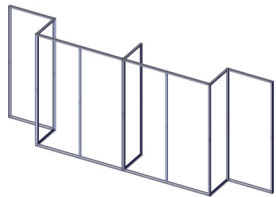
Reference Connection Method(s) 1, 2, 3, and 4 for more details.



### Step 3.

Gather the components to build the third section and then attach it to the right side of the second section. Use the Exploded View for part labels.

Reference Connection Method(s) 1, 2, 3, and 4 for more details.

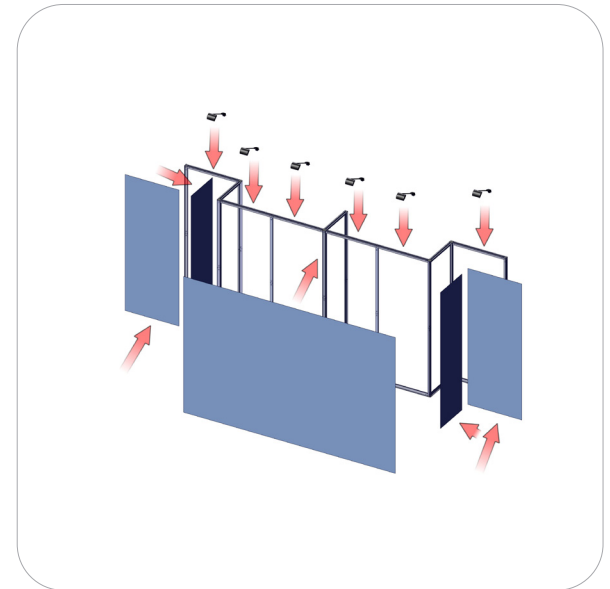
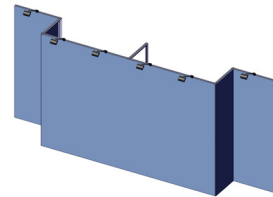


### Step 4.

Apply the graphics to each frame and attach the lights to the top of the frame.

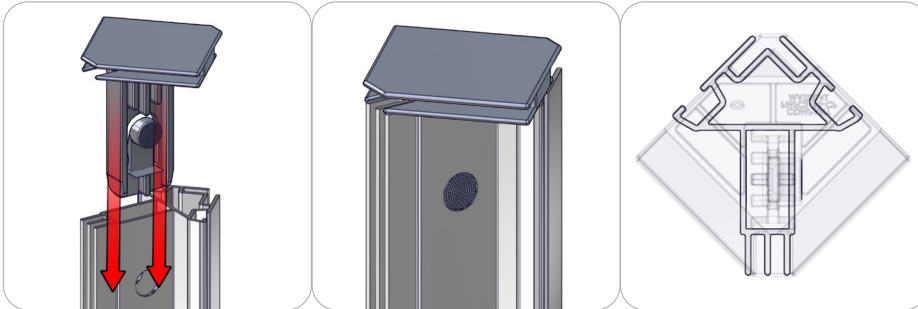
Reference Connection Method(s) 5 & 6 for more details.

Setup is complete.



# Connection Methods

## Connection Method 1: PMFC2-90-CAP



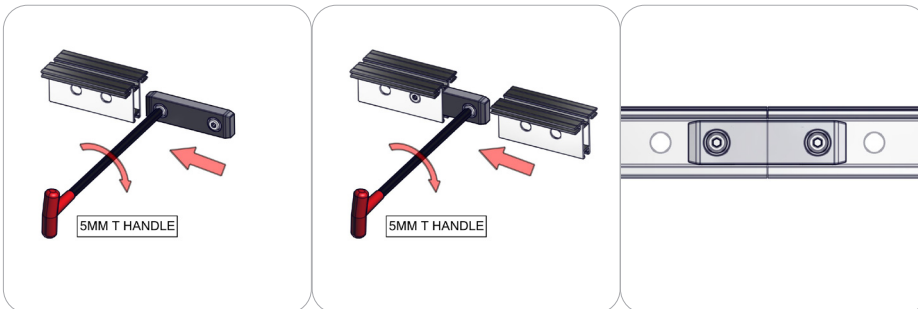
First, press button to insert the cap into the extrusion. The button will snap in place.

## Connection Method 2: PHFC2



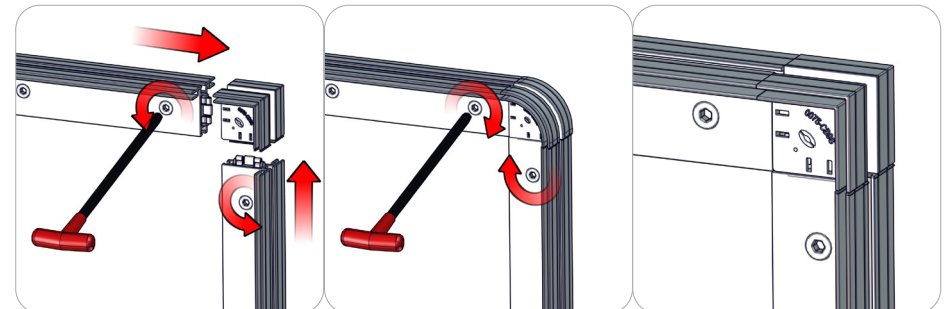
First, with the cam lock disengaged, place the cam lock teeth into the extrusion channel. Second, use the allen key tool to lock it in place. Make half turns clock-wise to engage the cam lock. Do not over tighten the lock buttons.

## Connection Method 3: IB2



First, insert the in-line connector into the extrusion while holding in the lock button. Then, slide the next extrusion onto the same in-line connector again holding in the lock button. Finally, use the provided allen key to lock the in-line connector in place. Use the allen key tool to turn the lock buttons, make quarter turns and do not over tighten the lock buttons.

## Connection Method 4: CB9-R / CB9-S

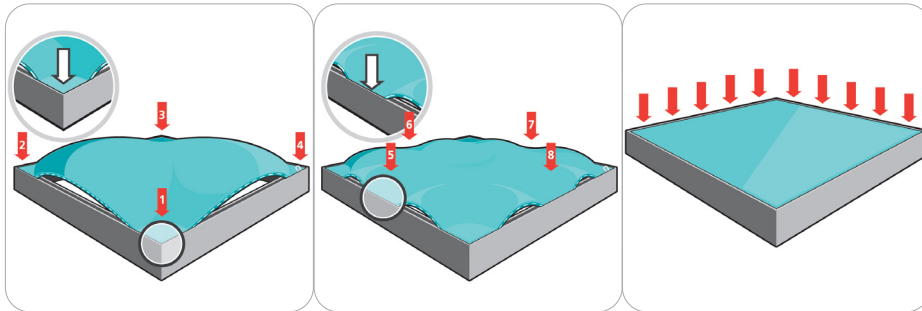


First, make sure the cam lock button is unlocked. Second, insert the cam lock teeth in to corner bracket channel. Third, tighten the cam lock button. Use the allen key tool to turn the lock buttons, make quarter turns and do not over tighten the lock buttons. Repeat for opposite end.



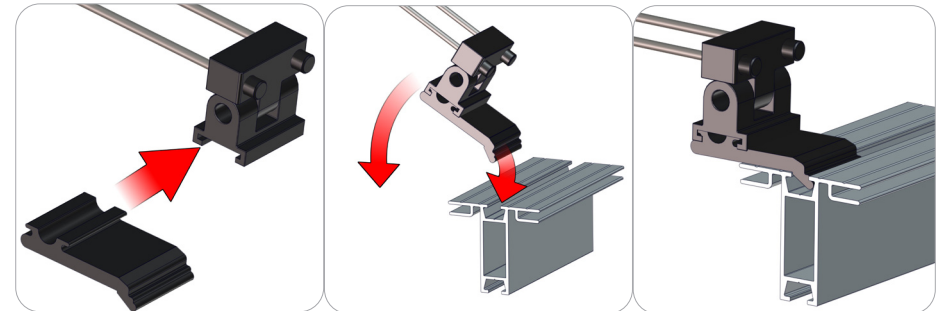
# Connection Methods

## Connection Method 5: Graphic Application



First, insert the silicone edge frame corners into the frame graphic channel (points 1 through 4).  
Second, insert the silicone edge frame sides into the frame graphic channel (points 5 through 8).  
Third, push the remaining silicone edge fabric into the frame graphic channel.  
Similar setup is recommended for the opaque liner.  
To remove these panels, simply pull the loop tag sewn near a corner.

## Connection Method 6: LUM-200



First, slide the light clip into the dove tail end of the spot light. Second, rest the light clip into the extrusion channel. Make adjustments to the spot light if necessary.